

## The Great 'On Yer Bike' Sponsored Cycle Ride

One of this year's major fundraising events for all our young people and adults is a sponsored cycle ride.



**The Challenge** To cycle as many kilometres of the Nickey Line as you can and raise at least £10 in sponsorship

**How?** By cycling or scootering along the Nickey line between 9.00am and 1.00pm on Sunday 7<sup>th</sup> July

**Where?** Meet on Eastman Way (just past the Council Refuse Tip)

Beavers, Cubs and Scouts must cycle/scooter with a parent or as a group with their leader.

We ask that each Cub/Scout/Explorer/Leader/Parent tries to find as many sponsors as possible. Attached to this letter is a sponsor form for you to complete.

All money raised goes to your son's/daughter's Scout Group and the Phasels Wood and Tolmers Campsite Appeal. Every cyclist/scooterer will be presented with an 'I cycled/scootered the Nickey Line for Scouting' Certificate and a souvenir badge.

Just turn up any time between 9.00 am - 1.00pm and tackle your challenge.

Refreshments and technical backup will be available all day.

Hope to see you there.

From the District Fundraising Events Team

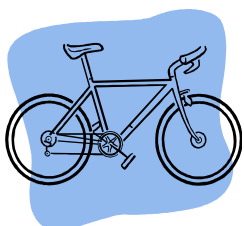


Don't forget your cycle helmet!

I have received the 'On Yer Bike' Sponsored Cycle letter and will be taking part in the event.

I enclose my booking fee of £1 per person

Name(s) of those taking part: \_\_\_\_\_



Scout Group \_\_\_\_\_