

...EVERYDAY ADVENTURE



Hemel Hempstead

District Scouts

Annual Report

2011





Table of contents

Hemel Hempstead District.....	3
Chairman's Report.....	3
District Commissioner's Report	4
Hemel Hempstead Beavers	5
Hemel Hempstead Cubs.....	7
Hemel Hempstead Scouts.....	8
Hemel Hempstead	9
Lochearnhead 2010	9
Hemel Hempstead Explorers	10
Hemel Hempstead Network	15
Hemel Hempstead Active Support	17
Appendix 1 - Group Meetings	20
Appendix 2 - Financial Report	21

Hemel Hempstead District Scouts

Email:- info@hemelscouts.co.uk
website www.hemel-scouts.co.uk
Telephone 0844 414 2318

Hemel Hempstead District

A Round Up of 2010

Chairman's Report

I have in my hand a pamphlet produced by the Scout Association for parents. It is aptly named 'Where Did All That Mud Come From? 'The No-Nonsense Parents' Guide to Scouting'. It reminds parents that there are 28 million scouts in 216 countries who join in the fun of Scouting every week. Scouting benefits these young people in ways that will stay with them for the rest of their lives. The programme gives them the opportunity to learn by 'doing'. It is arranged around Outdoor and Adventure, Global, Community, Fit for Life, Creative and Belief and Attitudes 'Zones'. Leaders are trained to deliver this whilst ensuring the young people's safety as they enjoy themselves and learn. Scouting is all about adventure at all levels and in many forms. Rather than just extreme activities it encompasses the many ways that Scouting challenges and stretches the lives of young people. To a Beaver Scout, waking up the morning after his or her first night away from home, is as much an adventure as a member of the Scout Network hang-gliding or scuba diving. It's all possible in Scouting.

It is good to see that the Hemel Hempstead District has continued to progress, develop and flourish with an exciting programme throughout 2010. Our 201 leaders have continued to challenge our 948 young people on a weekly basis and it is a real privilege for

me as Chairman of the District to be able to see many of the sections enjoying these challenging activities that make up their programme. On one occasion recently, as the young people were gathering into a horseshoe at the end of a meeting I heard a leader call out "Hurry up we're doing an investment." I turned slightly to hide the smile that spread across my face and I saw two parents come through the door together and sit to watch the close of the meeting "Oh look" I heard one say to the other as they watched the proceedings, "He's doing an investment." I couldn't stop the smile turning to a grin!

But, this true story made me think. An investment is something that we put by to use in the future and that is exactly what often happens at an investiture. Leaders often invest young people into each of our sections without really knowing them or their capabilities and without any questions as to their potential. We open our doors to all young people in our society without question. It is then through the dedicated and generous gift of leaders' time that skills, talents and personalities are developed that will last for the lifetime of these new citizens we are helping to create.

It is probably a hard challenge for leaders, but I ask that next time you invest a new member into your section you cast a thought ahead a few years and imagine that it may be this young person collecting a District or County Trophy, attending a Jamboree or International Camp or visiting Windsor or Buckingham Palace to pick up their

~ 3 ~

Queen's Scout Award or Gold Duke of Edinburgh's Award.

We owe a great debt of gratitude to all of our leaders, so I thank them, and I hope that they will all come along to celebrate and be thanked together when the opportunity arises. You will all be able to see just what both they and our young members have achieved this year by reading the rest of this Report.

Keith Gower

District Chairman

District Commissioner's Report

What a year 2010 turned out to be. The census demonstrated again that the district was growing at a sustainable rate, nothing too outrageous but enough to give us the confidence to look to take a previously mothballed group and put it back into full production. Fellowship was retired as a section nationally and we took the opportunity to be at the forefront of this transition creating Active Support (Scout Active Support or as it seems to be frequently known as SAS). The Hemel District Active Support has been set initially as 6 groups covering different activities, many of these groups have contributed to this report and I will leave that to tell its own story. Network continues to grow seeing a couple of its members accomplishing Gold DofE and one presented with Queen Scout Award, something Hemel Hempstead has not seen in many years.

Our structured District activities have been well supported as a complement to the Groups program allowing some of our smaller Groups to undertake activities that they cannot resource on their own. As a District we accomplished over 1000 nights away for the young people and again hosted the County Cub Night Hike around the Leverstock Green part of town with some 95 teams participating from across the county.

3rd Boxmoor Scout Group, one of the oldest in the District restarted in the autumn term with an investiture of over 40 young people and 6 adults, this has continued to grow. We were approached by Lockers Park School asking if we could accommodate some of their young people in to a local group, further discussions proved that we needed to set up a new Cub pack, this has been added to 1st Bennetts End and the young people were invested in early January 2011.

Thanks for your continued support in the Hemel District.

Stuart Dickens
District Commissioner

Hemel Hempstead Beavers A Round Up of 2010

6 – 8 age group

The Beavers of Hemel Hempstead have entered their 25th Anniversary year in 2011. The Beaver section is still as active, although our colonies numbers have had to unfortunately reduce slightly, all the remaining colonies are still going strong.



We had yet another great football tournament, a joint cooking event with the Cubs in the summer of 2010, with a beaver challenge day and Christmas party later in the year. 2011 saw the beginnings of 25th anniversary celebrations within Hertfordshire County, our district and individual colonies. In February Hemel Hempstead District Beavers joined together to celebrate and participate in Hertfordshire County's challenge to all colonies and districts to hold a sleepover all on the same night at different venues throughout the County. Then in March the Beavers visited the Roald Dahl museum in Great Missenden. Many of the events arranged for the Beavers have enabled the young people to attain

badges and work towards other awards within their colonies, not forgetting the opportunity to meet with other Beavers and interact and learn from their counterparts. I would like to give my thanks and much appreciation to all the Leaders who have organised these events over the last year and who have worked tirelessly to ensure events ran smoothly, as without them many of our events would not happen, Tina Willmore, Phil McLachlan, Ingrid Allen, Christine Dickens and to a couple of newer organisers Kirsty Humphrey and Lynley Meyers. My thanks also go to all the many other leaders and helpers who have given their time and support in helping at events for the Beavers of Hemel Hempstead throughout the year.

Each year I praise the efforts of all our leaders and supporters and this year it gives me great pleasure to announce that Hertfordshire County have also acknowledged the work of our leaders and Beavers. Hemel Hempstead received an award for team working due to everyone's efforts, adults and young people alike, in working together at the District Beaver Sleepover in February. This award goes to demonstrate what can be achieved when everyone strives for the same goal and puts the principles of Scouting and our Promise as leaders to put our young people first. Scouting is about doing one's best and joining together across any boundaries and uniting as one District and movement. These efforts have also been supported and acknowledged by Dacorum's Mayor who attended the Saturday afternoon

~ 5 ~

Hemel Hempstead District Scouts Annual Report 2011

Email:- info@hemel-scouts.co.uk website www.hemel-scouts.co.uk Telephone 0844 414 2318

along with MP Mike Penning. Well done to you all.

I hope the next 25 years are as good as the first, and that we recruit many more dedicated and capable leaders as we have now.

Yours in scouting

Rae

ADC Beavers



Hemel Hempstead Cubs

A Round Up of 2010

8 -10½ age group

We started off the year with a District camp to Braid Wood. Amongst the activities there was a trip to Wicksteed Park.

In July Beavers and Cubs joined together for a cooking event, they cooked items like dampers, sausages, marshmallows.

September saw the Annual County Night Hike take place, up to a thousand Cubs and Scouts from all over Hertfordshire took part.

In October teams took part in a cooking competition. They cooked sausages and mash followed by chocolate pudding.

In November cubs did various activities to get their Astronomy Badge.

The Cubs and Scouts had the annual swimming event in January.

March saw a team from Hemel Hempstead represent us in the County Swimming Competition and they did very well by coming 4th out of the 7 teams that entered.

In April a new event took place where cubs went on a trip to London and took pictures in front of famous landmarks like Buckingham Palace, The London Eye and Tower Bridge amongst others.

We are planning a Sixer and Seconder team building event which takes place a few days before the District AGM.

Lastly a very big thank you to all those who helped run and organise events throughout the year.

Paul Rathbone - ADC (Cub Scouts)

Sheila Neep - DCSL



~ 7 ~

Hemel Hempstead Scouts

A Round Up of 2010

10½ – 14 age group

The 12 Scout Troops in our Scout section continue to provide our 10 to 14 year old members challenging activities. Their success is a tribute to the hard work and dedication of the leaders who give up so much time to run their programmes.

For some time now the section has not had a designated Assistant District Commissioner, so it is great to see leaders from around the District come together to help provide activities for our youngsters with little central input.

As well as regular weekly meetings, activities and camps organised by their own Groups, Scouts were also able to take advantage of a variety of activities organised within the District. These included the cooking competition where teams used their ingenuity to produce a meal with set ingredients, and the ever popular series of 'back to basics' bushcraft training sessions provided by a team of leaders from around the District. The weekly dinghy sailing based at Bury Lake, Rickmansworth again proved popular and provided a springboard for entries in the County regatta. Scouts skills were again challenged by the Nimrod an event run by the District Explorer Scout Section for them.

Troops and individual Scouts were also able to take part in the programme of activities provided by the County teams, including climbing and sailing. The District was again well represented at

the annual Green Beret competition weekend in November.

Many Scout troops around the District have been helping support the preparations and fundraising to send our 4 Scouts to the World Scout Jamboree in Sweden this summer.

Colin Rivett - ADC



Hemel Hempstead
Lochearnhead 2010

14 – 25 age group



Hemel Hempstead Explorers

A Round Up of 2010

14 – 18 age group

Any ordinary year normally kicks off with the annual Winter Walking trip to Snowdonia but this year was an exception, as it was a Lochearnhead year we decided it was time to celebrate Burns night!



With a bit of help from Andy Glass and his Nephew we addressed the haggis in style complete with a Piper and a full Scot's accent from Andy!



The Explorers got involved too with speeches and toasts by laddies and lassies.

It was educational too, with the story of Mr Burns and some of his poetry, it was probably the best turned out event in the calendar with not an empty seat in the house.

Snowdonia followed in February and with good (but cold) weather we were able to get some navigation training in and some fun in the snow patches too. Some groups even got the bonus of watching a helicopter rescue from one of the peaks.



We kept the Explorers out until dusk to practice some emergency procedures and give them 'an experience of what being cold really feels like' (thanks to Uni for that!) I am sure they all thanked us for the experience!



The Sunday saw us out again on a crisp day with some technical training on rope work and search and rescue techniques.



HEAT followed, a county event ably supported by Hemel Explorers with a day out in Portsmouth and a liberal

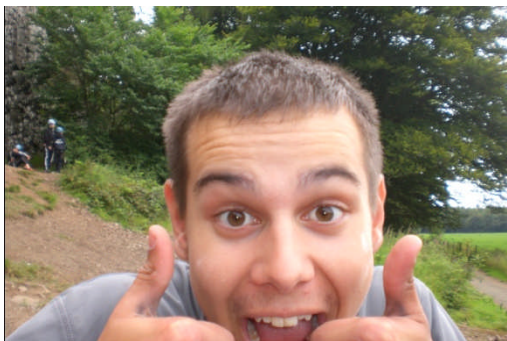
splashing of 'Hula-Hoopa size'!



In May the Explorers manned the activities for the younger members of the District and the AGM. Those who attended were rewarded with a meal at Aroma in Hemel in June.

The Summer saw the District travel to Scotland to Hertfordshire Scouts base in Lochearnhead for a week. All the way to Scotland for a week? Is it worth it? I hear you cry!

Definitely!!



With such a short time in Scotland a new approach was called for and the Explorers and Scouts got to choose their own specialist activity.

Some chose climbing -



Some chose sailing -



Some chose mountain biking -



But all chose FUN!

They also got to go on a two day expedition in the hills, a chance to hone their navigational and wild camping skills.



And that wasn't all, there was also the opportunity to white water rafting!



Lochearnhead also saw 2 groups completing their Duke of Edinburgh Silver and Gold Expeditions in wild country, this is all part of the Bronze,

Silver and Gold DofE Scheme that the Hemel Hempstead Leader team run for the young people.

It consists of regular planning meetings every month and about 6 expeditions a year!



Boosted by the General Election, one of the Explorers wrote to our local MP and as a result the Units were invited to visit parliament.



Mike Penning was a perfect host, showing us round places normally reserved for VIP's

Many Explorers got invested in the grounds with Big Ben looking down.



excellent Young Leaders Unit which provides training and support for the Explorers who are Young Leaders within the Beaver, Cub and Scout sections within the District.

Our thanks must go to our strong team of leaders who give up tremendous amounts of time, including holidays to make all of the above events possible and without whom we would not have such a successful Explorer Unit.



Richard Hirons

District Explorer Scout Commissioner.

Is that all?

So what else did we do?

- Peak Assault
- Chiltern Challenge
- Organised Nimrod
- County Aroma Christmas Meal
- Fire Fighters Skills Course
- Ice Skating
- Bushcraft
- County Cub Night Hike
- AGM
- Leaders gained DofE accreditation for assessment of expeditions

We have 60+ Explorers and 10 Leaders, which are split over 2 units which meet on Tuesdays and Thursdays. As well as the events mentioned we have an

~ 14 ~

Hemel Hempstead District Scouts Annual Report 2011

Email:- info@hemel-scouts.co.uk website www.hemel-scouts.co.uk Telephone 0844 414 2318

Hemel Hempstead Network

A Round Up of 2010

18 – 25 age group

The Hemel Hempstead Scout Network has had another amazing year of fun and challenges. The Hemel Scout Network members took part in a wide range of activities and entertainment. The Hemel Hempstead Scout Network remains one of the most active in the county.

The Scout Network challenges ran through the year with our members taking part in lots of activities including climbing, geocaching, rock climbing, pasta engineering, raft building, sweet making and even a Scalextrix night .

In February, we spent an amazing weekend in Snowdonia, conquering the snow capped peaks.

Network members supported the running of events for other sections including supporting this year's Lochearnhead camp, a Firework display and the Explorer Bronze D of E expedition.

Our successes continued by winning the Network section of the Peak Assault mountain competition. Our team competed against tough opposition to win the Lydia Jack Trophy making us one of the top Networks across Hertfordshire. We also joined other Networks for the Hertfordshire Scout Network Exodus camp at Well End.

The highlight of the year was again Chiltern Challenge. The Hemel Scout Network organises and runs this event

for the County's Explorer scouts. Even the rain couldn't stop the challenge and an amazing weekend was had by everyone who took part.

Being a Scout Network member may be hectic but it's been another great year, and we've made the most of being Scout Network. The membership continued to grow in 2010, with new members joining from both the Explorer Scout section and from outside the organisation.

Geoff Angell
District Scout Network Leader

Bring on 2011!





Hemel Hempstead Active Support

A Round Up of 2010

18 + and above group

Events

The Scout Active Support – Event Support Section has been introduced to the District in order to provide assistance to event organisers in the effective delivery of the District events.

Over the past twelve months the Scout Active Support – Event Support Section has sprouted, grown and bloomed within the District. Our numbers have grown and are on a steady increase involving a wide range of people incorporating those from both uniformed and non uniformed areas of the District. We have also managed to recruit some people who are new to scouting altogether, helping to grow our District even further. We currently have 21 members most of which have now dedicated time to the District to assist in the delivery of the District events.

The Scout Active Support – Event Support Section have been to several events this year providing support to all of the different age ranges from Beavers through to Scout Network, these events include The Beaver Sleepover, District swimming gala, District Aquasplash event and the District AGM. We have also provided support to the County by

assisting in the running of the Explorer competition Chiltern Challenge.

We have also provided our members with the opportunity to become trained in some of the activities at Phasels Wood Activity Centre with the help of the District team, further increasing our skills base and therefore increasing the amount of activities we can help to provide. This has to be the aim for the next 12 months along with increasing our members further thus helping us provide the best support to our District possible.

Navigation Skills Active Support Unit

A very successful first “Geocaching Day” was held in October with all 24 spaces booked within days of bookings going live. Scouts from 1st Apsley, 1st Bennetts End, 1st Kings Langley, 1st Leverstock Green and 1st Warners End spent the day learning about the satellite system which allows us to use GPS technology and multiple uses.

With the basics understood they were let loose with a GPS unit around a pre-set course on the school field to get used to using a GPS unit before plotting a route of 6 geocaches within three miles of Hobbs Hill Wood School (where the activity took place).

As the weather cleared up and the sun came out the Scouts split into small teams to go out and find the geocaches for real – with great success.

The Scout Active Support Unit has also:

- run a taster session for the Scout Network unit
- set up a number of courses in and around Hemel Hempstead (in particular Phasels Wood and Boxmoor)
- purchased 3 GPS units so that Groups in the District can try the activity for themselves

Media & Communications Scout Active Support Unit

During the past 12 months this unit has seen a number of successes:

- A new design for the website which continues to see a steady number of visits from both leaders and member of the public
- 13 “on-brand”, positive news stories in the Hemel Hempstead Gazette
- Two District Directories produced and distributed to all adults
- District calendar digitised with Google Calendar to enable leaders to synchronise with smartphones and electronic diaries
- Regular, role-based email communications to members of the District to ensure the right information reaches the right people at the right time.
- A Facebook page setup enabling leaders and parents to keep up to date with updates
- Online bookings and payment facility installed on the District website.

Thanks to those who support this unit by updating personal details on the national database (especially Steve Harris, who responds almost instantly to AA forms and change requests), Groups who supply photographs and write-ups

for events and those who provide content for the website, such as notes of meetings and information on District and County initiatives.

During 2011 I will be looking to build a team of reporters and photographers willing and able to attend District events to ensure we get write-up of events in a consistent form, supported by exciting photographs to share on our website and in media coverage – if you’re interested in doing this, drop an email to mail@hemel-scouts.co.uk

Sailing

During the 2010, the Water Activities Committee (renamed to the Scout Active Support Unit - Water Activities) has been busy promoting all aspects of water activities across the District. The Unit would to recognise and thank the contributions of Bruce Gregory and Simon Fancourt for all their energies and input to the running of the Water Activities committee throughout the last couple of years. Bruce and Simon both expressed a wish to step down from the Committee. Thanks must also go to all the other committee members for their continued energies in running water activities throughout the District. Also to all those Leaders (both on and off the water) encouraging our young people to take part in water activities

East Mersea Sailing week May 2010

This week was very successful both on the water and in the camp. 10 young people ranging from a number of groups

throughout the District were involved in the sailing sessions and all were successful in completing the requirements of their courses and were awarded the relevant RYA achievement certificates

General Sailing

The summer sailing session ran on Thursdays from April to July at the Bury Lake Young Mariners (BLYM) base in Rickmansworth. A total of 163 sailing sessions were attended again ranging across the groups in the District and in age range from Cub Scouts to Explorers and Leaders. As a result of the sailing sessions, a team of 6 young people were entered for the County Sailing regatta held at BLYM during September. Success was reported during this event with Explorer George Davy winning his sailing section and Scout Robert Nash finishing 3rd in his section.

Lochearnhead 2010

Sailing was offered to the participants of the Lochearnhead trip despite a reduced length of stay and numbers of overall attendees. Although the weather resulted in light winds for most of the week, those undertaking the sailing 3 day course achieved the requirements of the Scout Dinghy Sailor activity and Explorer Water Activities activity badges. Several other attendees enjoyed sailing at other times during the week.

Scout Shop Scout Active Support Unit

The shop has continued to trade successfully for the last 12 months, with a smooth handover from the previous manager David Thomas achieved. The team continues to enthusiastically man the shop each Tuesday, as well as operating a travelling shop on occasions such as District activities, the AGM, leader meetings and section open nights.

During the year we've worked hard to introduce changes to the shop operations as a result of consulting with leaders and parents:

- The shop now opens earlier to make it easier for parents with young children
- A credit/invoice facility has been introduced for Groups who wish to pay in this way
- Credit/debit card payments are now supported in-store
- "Scout and Proud" apparel is available to order through the shop, discounted from the RRP
- An online ordering service is available for all items (including badges for leaders) to ensure stock is available before visiting the shop
- A postal delivery service for those who don't have the time on a Tuesday to visit the shop

Appendix 1 - Group Meetings

	Monday		Tuesday		Wednesday		Thursday		Friday	
	Area	Times	Area	Times	Area	Times	Area	Times	Area	Times
Beavers	Apsley	17:30 18:30	Apsley	17:30 18:30	Apsley	17:30 18:30	Queensway	17:00 18:00	Apsley	18:00 19:00
	Bovingdon	17:30 18:30			Boxmoor (St John's Road)	18:15 19:15	Leverstock Green	17:00 18:00	Bennetts End	17:00 18:00
	Boxmoor (Woodland Close)	18:00 19:00			Kings Langley	17:30 18:30			Boxmoor (St John's Road)	18:15 19:15
					Leverstock Green	17:00 18:00				
					Warners End	18:00 19:00				
				Grovehill	17:15 18:15					
Cubs	Apsley	18:45 20:15	Leverstock Green	18:30 20:00	Apsley	18:45 20:15	Apsley	18:30 20:00	Bennetts End	18:00 19:30
	Bovingdon	18:45 20:15			Grovehill	18:30 20:00	Queensway	18:15 19:45		
	Boxmoor (St John's Road)	18:15 19:45			Woodhall Farm	18:30 20:00	Boxmoor (Woodland Close)	18:30 20:00		
	Leverstock Green	18:30 20:00			Kings Langley	18:30 20:00				
	Warners End	18:30 20:15								
Scouts			Apsley	19:00 20:30	Grovehill	19:30 21:30			Apsley	19:30 21:00
					Warners End	19:30 21:00			Bennetts End	19:30 21:30
									Bovingdon	19:00 21:00
									Boxmoor (St John's Road)	19:30 21:30
									Kings Langley	19:30 21:00
									Leverstock Green	19:30 21:30
									Woodhall Farm	19:00 21:00
						Queensway	19:00 21:00			
Explorers			Boxmoor / Kings Langley	20:00 22:00			Leverstock Green	20:00 22:00		

~ 20 ~

Hemel Hempstead District Scouts Annual Report 2011

Email:- info@hemel-scouts.co.uk website www.hemel-scouts.co.uk Telephone 0844 414 2318

Appendix 2 - Financial Report

Hemel Hempstead District Scouts

Annual Accounts for the
Year ended 31 December 2010

Index

Trustees	Page 2
Receipts & Payments Summary	Page 3
Receipts	Page 4
Payments	Page 5
Statement of Assets & Liabilities	Page 6
Notes to the Accounts	Page 7
Independent Examiner's Report	Page 8

SCOUTS

Hemel Hempstead District Scout Council

Registered Charity Number 302536

The District is a Trust established under the Policy, Organisation and Rules of
The Scout Association.

Trustees are appointed in accordance with the Policy, Organisation and Rules.

President	(vacant)		
Vice-Presidents	Mrs P West Mrs M Humphries		Mr B Neep
Trustees – Ex-officio	Mr Keith Gower Mr Stuart Dickens Mr David Fleming Mr Mike Watson Mr Frank Monnington Mr Geoff Angell	Chairman DC Treasurer Secretary DESC DSNL	(Nov 2007) (Sept 2007) (Nov 2004) (May 1988) (May 2000) (Nov 2007)
Trustees – Nominated	Mrs Jo Haynes Mr Richard Haynes Mr Gordon Dickens Miss Charli-Anne Isaacs		(Nov 1999) (May 2005) (May 2008) (May 2010)
Trustees – Elected	Ms Sandra Rivett Mr Russ Dyble Mr Simon Fancourt Mrs Lorna Glass		(May 2005) (May 2005) (May 2007) (May 2009)
Bankers	Lloyds TSB Bank Chesham Bucks		Lloyds TSB Bank & HSBC Hemel Hempstead Herts

December 2010

HEMEL HEMPSTEAD DISTRICT SCOUT COUNCIL

Receipts & Payments Summary for the year ended 31 December

	2010	2009
	£	£
Balance brought forward from previous year	45,379.98	35,450.34
Total receipts	64,572.32	56,154.83
Total payments	-52,939.32	-46,225.19
Net receipts (payments)	11,633.00	9,929.64
Balance carried forward	57,012.98	45,379.98
Cash, Bank & Deposit Account Balances (See Statement of Assets & Liabilities)	57,012.98	45,379.98

The above account and accompanying statement of assets and liabilities were approved by the Trustees

on 11th May 2011 and signed on their behalf by



HEMEL HEMPSTEAD DISTRICT SCOUT COUNCIL

Receipts for the year ended 31 December	2010	2009
MEMBERSHIP SUBSCRIPTIONS	44,226.00	40,193.10
less: Paid	33,940.00	30,619.60
	<u>10,286.00</u>	<u>9,573.50</u>
Explorers Scout, Network & Fellowship Subs	2,154.00	2,754.25
Jamboree receipts	3,484.30	0.00
less: Jamboree payments	7,700.00	0.00
	8,224.30	12,327.75
 INVESTMENT INCOME RECEIVED		
Bank interest	0.00	0.00
Scout Association Short Term Investment Service	177.57	307.97
National Savings	0.00	0.00
War Loan interest	1.74	1.74
	179.31	309.71
 DONATIONS / GRANTS		
Miscellaneous donations	469.31	2,480.53
	469.31	2,480.53
 ACTIVITIES		
Beavers, Cubs & Scouts	11,554.30	4,676.34
Aquasplash	4,395.00	2,055.00
Explorer Scouts	5,734.52	6,510.00
Fellowship	0.00	0.00
Locheamhead Camp 2010	11,058.00	550.00
Network	366.50	4,245.00
Sailing	2,979.48	3,850.00
Jamboree Fundraising	4,696.09	625.00
	40,783.89	22,511.34
 OTHER INCOME		
Scout Shop Sales	13,102.08	13,375.10
Fundraising	665.50	426.77
DHQ Income	1,056.00	1,408.00
AGM	0.00	0.00
Gift Aid	61.76	2,818.07
	14,885.34	18,027.94
 SUNDRY RECEIPTS		
Miscellaneous Income	30.17	0.00
St Georges's Day Parade Collection	0.00	293.09
	30.17	293.09
 EXCEPTIONAL INCOME		
Tudor Challenge	0.00	204.47
	0.00	204.47
 TOTAL RECEIPTS FOR THE YEAR	64,572.32	56,154.83

HEMEL HEMPSTEAD DISTRICT SCOUT COUNCIL

Payments for the year ended 31 December	2010	2009
PREMISES		
District HQ	1,760.75	2,570.81
Explorer Partnership Agreements	1,188.00	1,309.00
	2,948.75	3,879.81
DONATIONS / GRANTS		
Donations / Grants	800.00	275.53
St Georges's Day Collection	0.00	293.09
	800.00	568.62
ACTIVITIES		
Jamboree Fundraising	1,870.43	118.80
Aquasplash	3,433.99	1,453.92
Beavers, Cubs & Scouts	7,774.05	4,517.13
Explorer Scouts	6,312.26	8,517.39
Fellowship	101.18	0.00
Lochearnhead Camp 2010	10,930.12	1,100.00
Network	869.72	4,656.11
Sailing	2,752.30	2,927.20
Training	0.00	258.02
	34,044.05	23,548.57
FUNDRAISING, ADMIN & ESTABLISHMENT EXPENSES		
Admin & Establishment	1,387.88	1,058.25
Fundraising	598.50	0.00
Jamboree selection expenses	0.00	960.75
AGM	223.09	280.38
Insurance	113.52	145.78
	2,322.99	2,445.16
OTHER EXPENSES		
Public Relations	0.00	0.00
Recruitment	0.00	0.00
St George's Day Parade	361.68	406.98
	361.68	406.98
CAPITAL EQUIPMENT		
Equipment	848.95	1,898.53
	848.95	1,898.53
OTHER EXPENDITURE		
Scout Shop Expenses	891.73	397.49
Scout Shop Stock Purchases	10,643.92	9,830.89
Sundry Expenses	77.25	71.18
	11,612.90	10,299.56
EXCEPTIONAL EXPENDITURE		
Development Day	0.00	3,177.96
	0.00	0.00
	0.00	3,177.96
TOTAL PAYMENTS FOR THE YEAR	<u>52,939.32</u>	<u>46,225.19</u>

HEMEL HEMPSTEAD DISTRICT SCOUT COUNCIL

Statement of Assets & Liabilities as at 31 December

	2010	2009
MONETARY ASSETS Cash, Bank and similar funds		
Bank Current Account(s)	17,289.59	11,035.50
Bank Deposit Account(s)	0.00	0.00
National Savings Accounts	2.00	2.00
The S.A. Short Term Investment Service - General Fund	29,399.09	24,273.40
The S.A. Short Term Investment Service - Jamboree Fund	9,900.58	9,848.70
Cash in hand	421.72	220.38
	57,012.98	45,379.98
 TOTAL BALANCES as at 31st DECEMBER	 58,918.91	 49,367.33
Less unrepresented cheques / outstanding transfers	3,597.18	4,881.90
Plus uncredited income / outstanding transfers	1,691.25	894.55
	57,012.98	45,379.98
 OTHER MONETARY ASSETS		
Debts due to District	0.00	0.00
	0.00	0.00
 INVESTMENT ASSETS		
Government Stocks	39.00	39.00
Other quoted securities at market value	0.00	0.00
Other Investment	0.00	0.00
	39.00	39.00
 NON-MONETARY ASSETS Assets for Charity's own use		
Shop Stock	7,318.37	5,877.56
Land and Buildings - Scout Shop	1,485.50	1,300.97
Motor Vehicles	0.00	0.00
Scouting equipment, furniture etc	5,222.68	4,373.73
	14,026.55	11,552.26
 LIABILITIES Those due within one year. Accounts not yet repaid		
Expenses incurred not yet invoiced	465.50	435.00
Subscriptions not yet repaid	0.00	0.00
	465.50	435.00
 LIABILITIES Those due after one year.		
Loan (with details)	0.00	0.00
Hire purchase owing / Leasing payments outstanding	0.00	0.00
Other long term liabilities	0.00	0.00
	0.00	0.00

Note to accounts.

- £1,000.00 remains from the 2010 Lochearnhead Camp. It is being carried forward to the next Lochearnhead Camp.
- £4,047.00 was collected in 2010 for the 2011 District Camp.
- £2,268.00 provision for 2011/2012 Activities is being carried over to 2011.
- £2,879.00 provision for District Development is being carried over to 2011.
- £817.00 provision for DHQ is being carried over to 2011.
- £5,500.00 provision for Scout Shop development is being carried over to 2011.

Independent Examiner's Report to the Trustees of the Hemel Hempstead District Scout Council

I report on the accounts of the District Scout Council for the year to 31st December 2010 which are set out on pages 3 to 7.

Respective Responsibilities of Trustees and Examiner

The District's trustees are responsible for the preparation of the accounts. They consider that an audit is not required for this year (under Section 43 (2) of the Charities Act 1993 (the 1993 Act) and that an independent examination is needed.

It is my responsibility to:

- Examine the accounts (under Section 43 (3) (a) of the 1993 Act)
- Follow the procedures laid down in the General Directions given by the Charity Commissioners (under Section 43 (7) (b) of the 1993 Act) and
- State whether particular matters have come to my attention.

Basis of Independent Examiner's Report

My examination was carried out in accordance with the General Directions given by the Charity Commissioners. An examination includes a review of the accounting records kept by the District and a comparison of the accounts presented with those records. It also includes consideration of any unusual items or disclosures in the accounts and seeking explanations from you as Trustees concerning any such matters. The procedures undertaken to not provide all the evidence that would be required in an audit and, consequently, I do not express an audit opinion on the view given by the accounts.

Independent Examiner's Statement

In connection with my examination no matter has come to my attention:

1. Which gives me reasonable cause to believe that in any material respect the requirements
 - to keep accounting records in accordance with Section 41 of the 1993 Act and
 - to prepare accounts which accord with the accounting records and comply with the accounting requirements of the 1993 Acthave not been met or
2. to which, in my opinion, attention should be drawn in order to enable a proper understanding of the accounts to be reached.

Name:..... ANDREW MCKEAN

Qualification:..... CHARTERED ACCOUNTANT

Address:..... 39 DENMARK

..... STREET BEDFORD

Date:..... 2 May 2011